

# MONTAGEANLEITUNG ASSEMBLY INSTRUCTION

## “Big Boy”

ART.-NR. 500 101

ART.-NR. 500 726



ROLAND WERK GmbH

Industriestraße 16

49681 Garrel

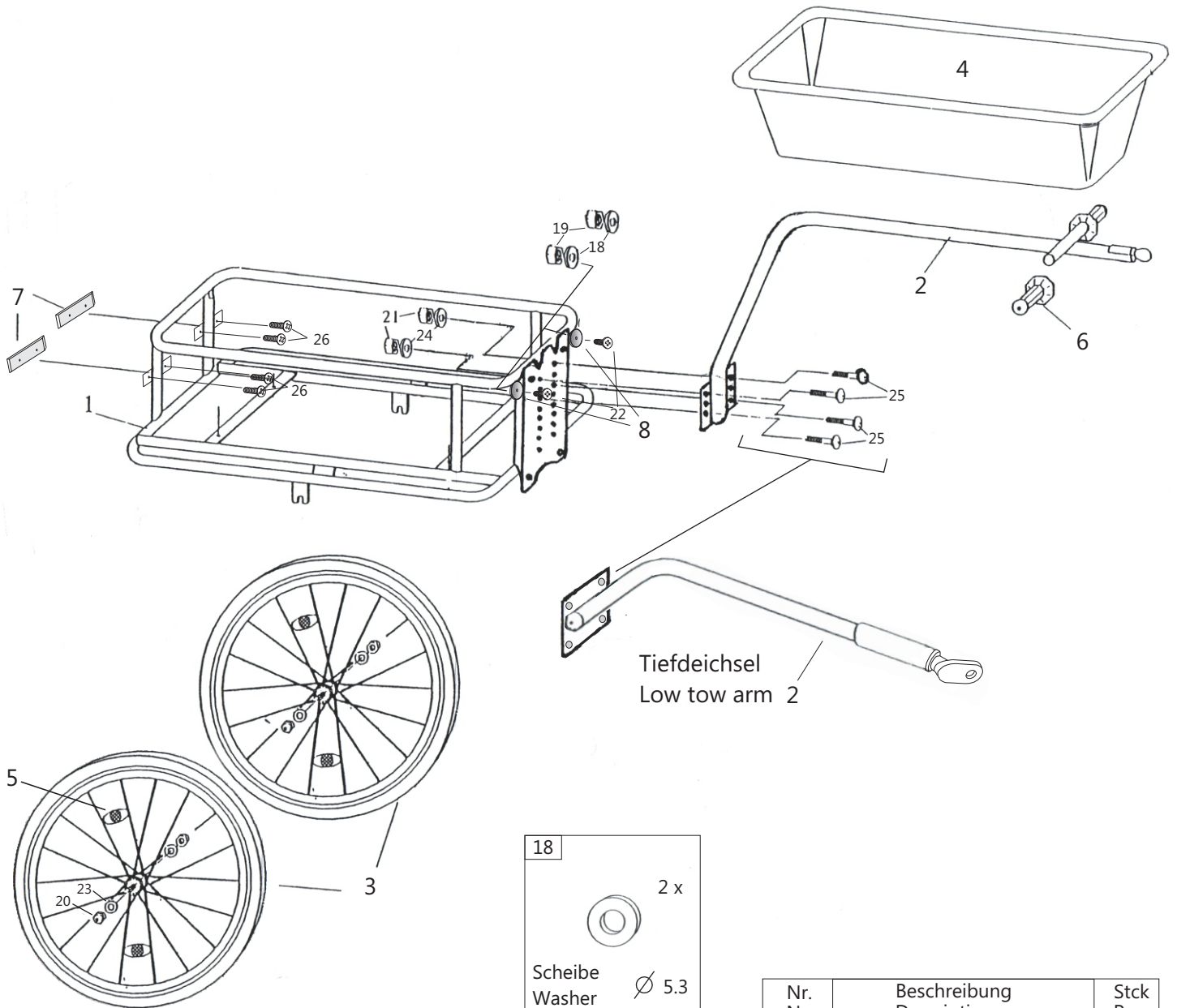
Tel.: 0 44 74 / 94 83-0

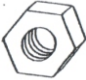
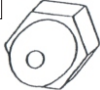
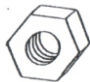
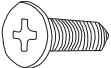



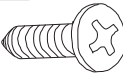
Fax: 0 44 74 / 94 83-33

[www.roland-werk.de](http://www.roland-werk.de)



# MONTAGEANLEITUNG ASSEMBLY INSTRUCTION



19	20	21	22
			
2 x Stopnmutter Stop Nut M5	4 x Achsmutter 7,9 FG (mit 20 N anziehen) Axle nut (fasten with 20 N)	4 x Mutter Nut M6	2 x 5 x 14mm Senkkopfschraube Countersunk bolt
23	24	25	26
			
8 x Scheibe Washer $\varnothing$ 8.4	4 x Scheibe Washer $\varnothing$ 6.4	4 x Schraube Screw M6 x 16	4 x 3,5 x 9,5mm Blechschaube Tapping screw

Nr. No.	Beschreibung Description	Stck Pcs
1	Rahmen Frame	1
2	Deichsel Tow arm	1
3	Laufäder Wheels	2
4	Kunststoffwanne Plastic tub	1
5	Speichenreflektoren Spoke reflectors	4
6	Kunststoffgriffe Plastic handle bars	2
7	Z-Reflektoren rot Z-Reflectors red	2
8	Reflektoren weiß Reflectors white	2